



English

# Preps

## Creating Files From Adobe InDesign CS2 for Windows

## Copyright

Copyright © 2005 Creo Inc. All rights reserved. The Creo wordmark, Creo logo, and the names of the Creo products and services referred to in this document are trademarks of Creo Inc.

Adobe, Acrobat, Adobe Illustrator, Distiller, Photoshop, PostScript, and PageMaker are trademarks of Adobe Systems Incorporated. Apple, iMac, Power Macintosh, AppleShare, AppleTalk, TrueType, ImageWriter, and LaserWriter are registered trademarks of Apple Computer, Inc. Macintosh is a trademark of Apple Computer, Inc., registered in the U.S.A. and other countries. PANTONE, Hexachrome, PANTONE Hexachrome, and PANTONE MATCHING SYSTEM are the property of Pantone, Inc. PEARL, PEARLsetter, PEARLhdp, PEARLdry, and PEARLgold are registered trademarks of Presstek, Inc. XEROX®, The Document Company®, and the digital X® are trademarks of XEROX CORPORATION. Other brand or product names are the trademarks or registered trademarks of their respective owners.

No copying, distribution, publication, modification, or incorporation of this document, in whole or part, is permitted without the express written permission of Creo Inc. In the event of any permitted copying, distribution, publication, modification, or incorporation of this document, no changes in or deletion of author attribution, trademark legend, or copyright notice shall be made. No part of this document may be reproduced, stored in a retrieval system, published, used for commercial exploitation, or transmitted, in any form by any means, electronic, mechanical, photocopying, recording, or otherwise, without the express written permission of Creo Inc. This document is distributed in Adobe Systems Incorporated's PDF (Portable Document Format). You may reproduce the document from the PDF file for internal use. Copies produced from the PDF file must be reproduced in whole.

Creo Inc.  
3700 Gilmore Way  
Burnaby, B.C., Canada  
V5G 4M1  
Tel: +1.604.451.2700  
Fax: +1.604.437.9891  
<http://www.creo.com>

Internal 731-00628A-EN Rev A  
Revised October 2005

# Creating Files for Use in Preps

In order for Preps to correctly process an Adobe® InDesign® Creative Suite 2 (CS2) document as a source file, you must export the document either as a device-independent PostScript® file or a Portable Document Format (PDF) file.

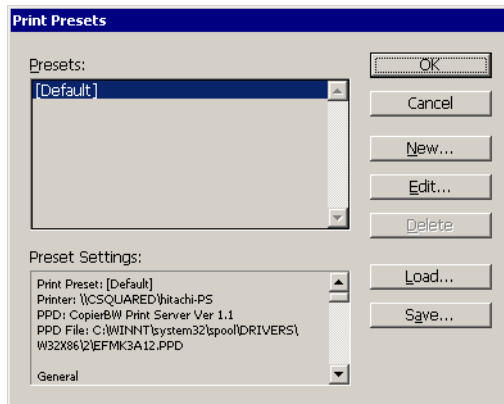
This document outlines recommended settings for creating the most compatible files for use with Preps. Other prepress software may require different settings.

## PostScript Files

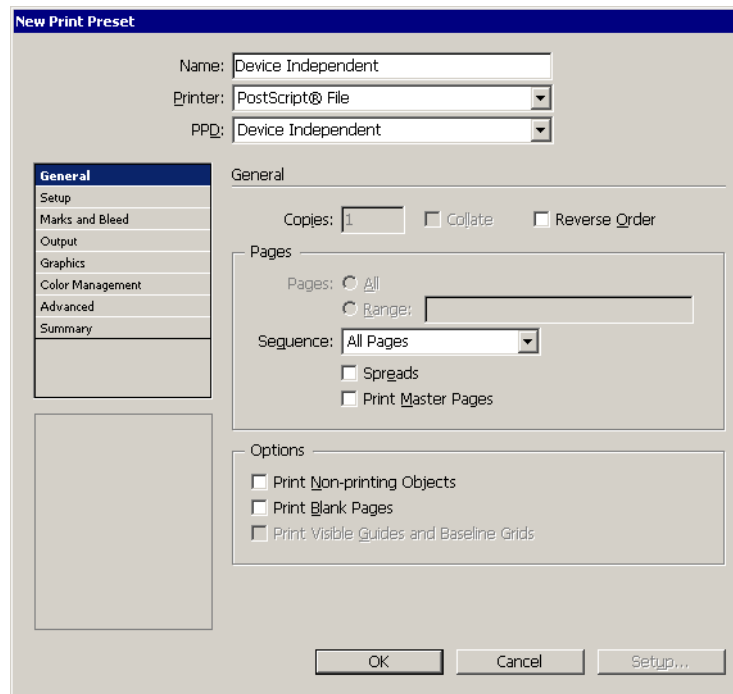
To ensure consistent printing to PostScript® file, we recommend that you create a printer style. A printer style allows you to repeatedly use a range of selected printer options without reconfiguring options every time you create a PostScript file.

### To create a printer style:

1. From the **File** menu, select **Print Presets > Define**.

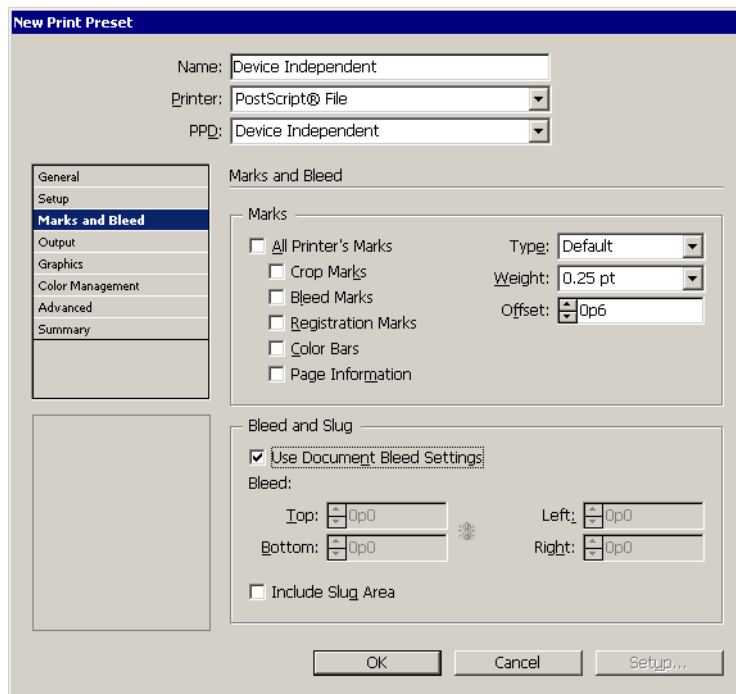


2. Click **New**.

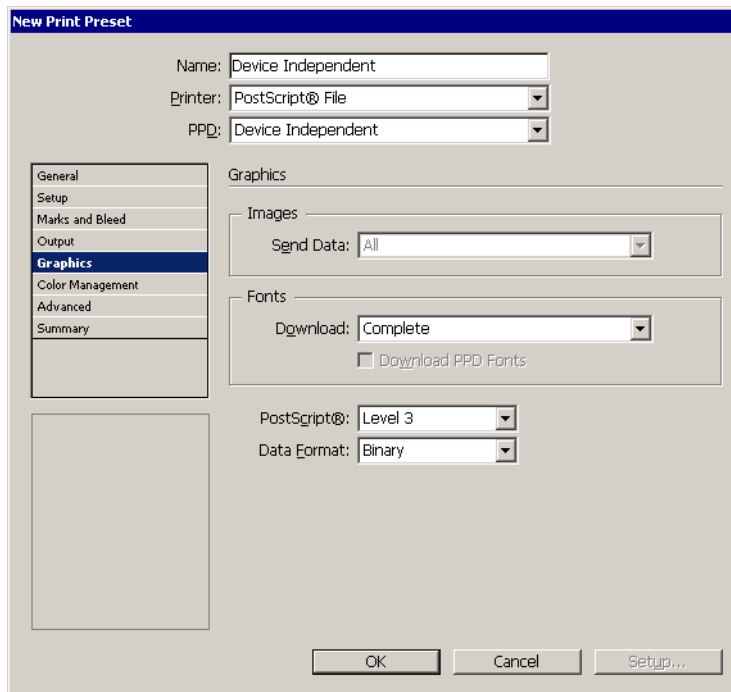


**Note:** Any settings not mentioned here are optional.

3. In the **Name** box, type a name for the printer style (for example, Device Independent).
4. In the **Printer** list, select **PostScript® File**.
5. In the **PPD** list, select **Device Independent**.
6. Select the page sequence and options as required.
7. From the view selector pane, select **Marks and Bleed**. (There are no options to select in the **Setup** and **Output** views when you are creating a device-independent PostScript file.)

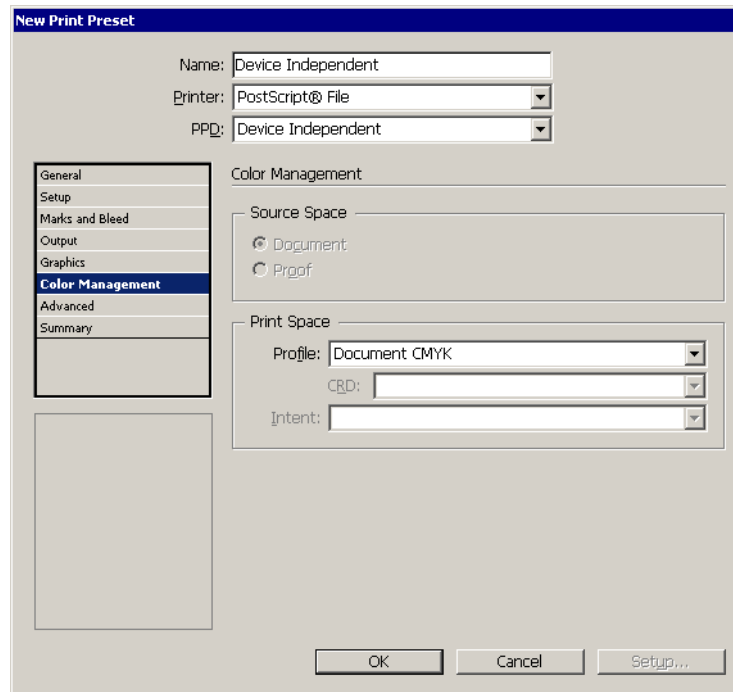


8. In the **Marks** area, clear all check boxes.
9. In the **Bleed and Slug** area, select the **Use Document Bleed Settings** check box, or clear this check box and type the bleed amount in the boxes. The default setting is **0**. We recommend 0.125 inches (9 points).
10. From the main options list, select **Graphics**.

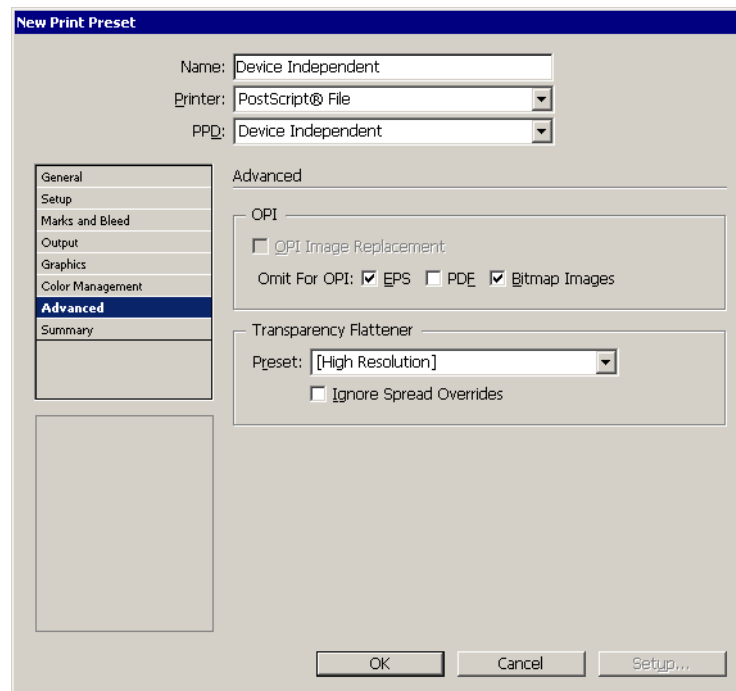


11. In the **Fonts** area, in the **Download** list, select **Complete**.
12. In the **PostScript®** list, select **Level 2** or **Level 3**, depending on the capabilities of your RIP.

13. In the **Data Format** list, select **Binary**.
14. In the main options list, select **Color Management**.



15. In the **Print Space** area, from the **Profile** list, select **Document CMYK**.
16. In the main options list, select **Advanced**.



17. In the **OPI** area, select the **OPI Image Replacement** check box, if required. This option allows InDesign to perform image replacement for low-resolution placed EPS files. When creating files for use in Preps, we recommend clearing this check box.
18. If you want Preps XL, Preps Pro, or an OPI server to replace low-resolution images, select the **Omit For OPI: EPS**, and **Bitmap Images** check boxes, and clear the **PDF** check box.
19. In the **Transparency Flattener** area, in the **Style** box, select **(High Resolution)**.



**Note:** When flattening transparent objects, spot colors may convert to CMYK.

20. Clear the **Ignore Spread Overrides** check box.
21. Click **OK**.

The printer style is saved.

#### **To use the printer style to create a PostScript file:**

- From the **File** menu, select **Print Presets > Device Independent** (style name).

You have created a prepress file from an InDesign CS2 document. You can add the file to a Preps job.

## PDF Files

You can export PDF files as version 1.3 files or later from InDesign CS2. If you use PDF 1.4 files or later, the Preps **Preferences** for PDF-to-PostScript conversion must be set to Adobe Acrobat® 5 or later.<sup>1</sup> When you save a PDF file from Adobe InDesign CS2, the page size is determined by the settings under **Document Setup**.

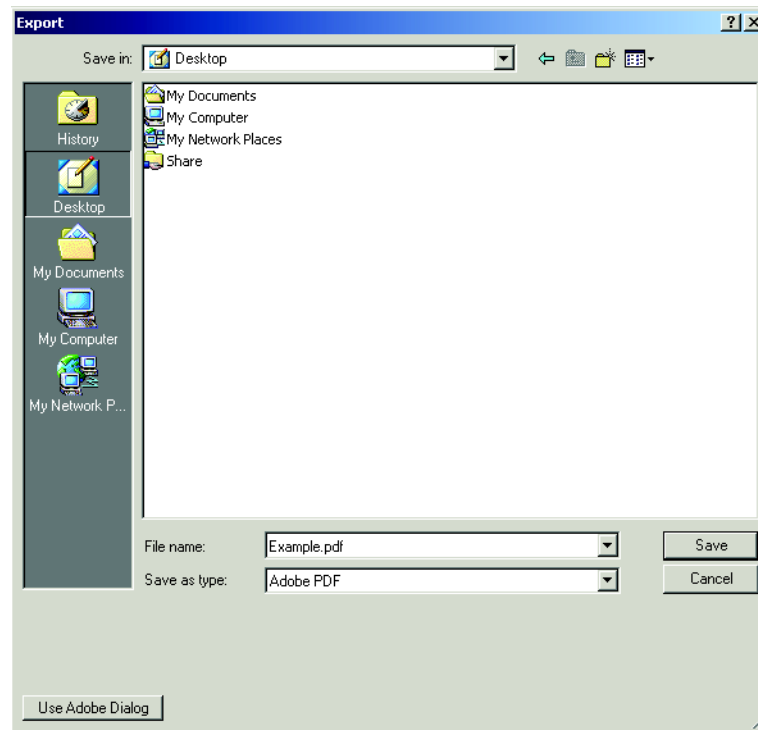
**Note:** You can use Adobe Acrobat to crop PDF files. If the document contains bleeds, you must select a larger page size under **Document Setup**, and you need to use offsets in Preps to correctly position the pages.

#### **To save as PDF:**

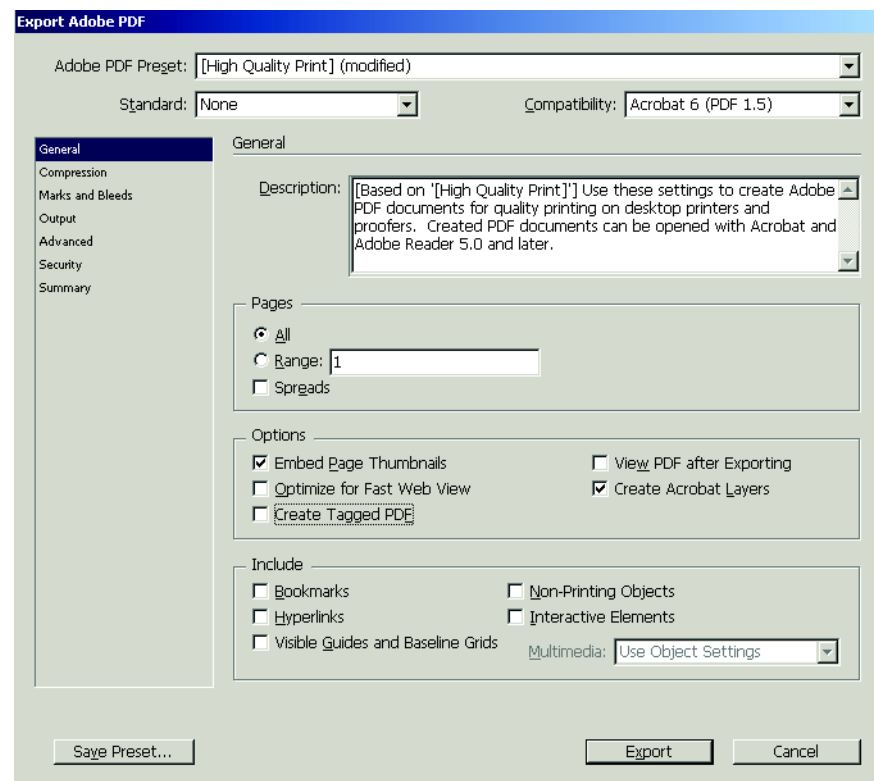
1. From the **File** menu, select **Export**.
2. Select Type **Adobe PDF** and select the location for saving the file.

---

<sup>1</sup> Full support for Adobe Acrobat 7 is to be planned for the Preps 5.2 release

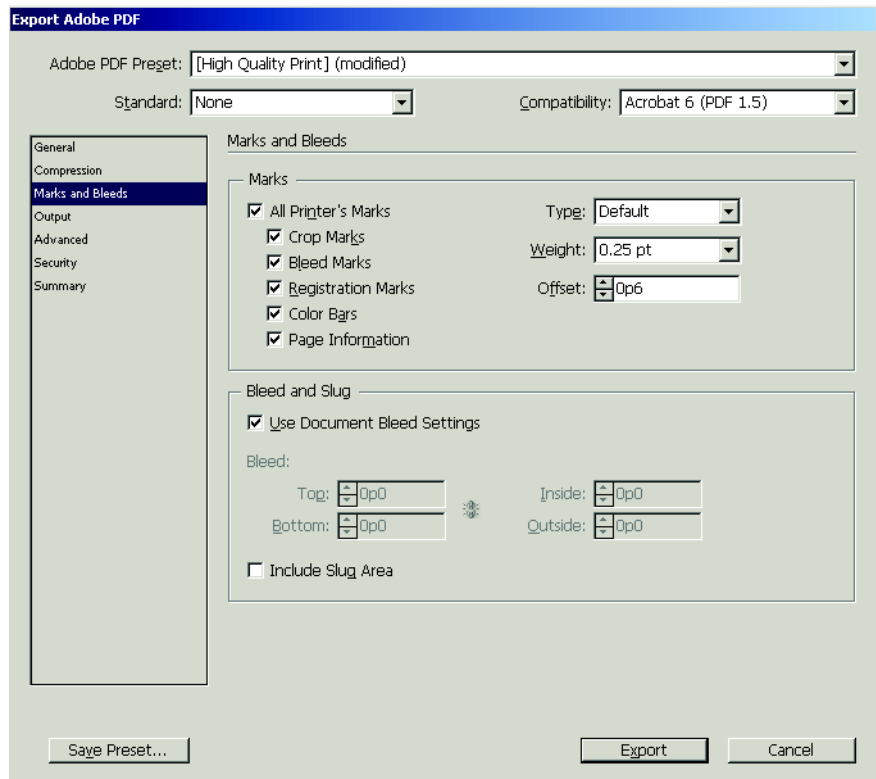


3. In the **Adobe PDF Preset** list, select **High Quality**.



**Note:** Any settings not mentioned here are optional.

4. Select the **General view**.
5. In the **Compatibility** list, select Acrobat 6, 5, or 4.
6. In the **Options** area, the following settings are required:
  - a. Clear the **Optimize for Fast Web View** check box.
  - b. If you selected Acrobat 6 and the document contains transparency, then select the **Create Acrobat Layers** check box.
7. In the main options list, select **Marks and Bleed** view.



8. In the **Marks and Bleed** pane select **Marks** as required
9. In the **Bleed and Slug** area select **Use Document Bleed Settings**.
10. Click **Export**.