

English

# Preps

## Creating Files From Macromedia FreeHand 10.0 for Windows

## Copyright

Copyright © 2004 Creo Inc. All rights reserved. Data subject to change without notice.

Internal 731-00500A-EN Rev A

Creo and the Creo logo are trademarks or registered trademarks of Creo Inc. The Creo products mentioned in this document are trademarks or service marks of Creo Inc. and may be registered in certain jurisdictions. Adobe and PostScript are trademarks of Adobe Systems Inc., are registered in the U.S. Patent and Trademark Office, and may be registered in other jurisdictions as well. Acrobat and the Acrobat logo are trademarks of Adobe Systems Incorporated, which may be registered in certain jurisdictions. Microsoft, Windows, and Windows NT are registered trademarks or trademarks of Microsoft Corporation in the U.S. and/or other countries. Other company and brand, product, and service names are for identification purposes only and may be trademarks or registered trademarks of their respective holders.

No copying, distribution, publication, modification, or incorporation of this document, in whole or part, is permitted without the express written permission of Creo Inc. In the event of any permitted copying, distribution, publication, modification, or incorporation of this document, no changes in or deletion of author attribution, trademark legend, or copyright notice shall be made. No part of this document may be reproduced, stored in a retrieval system, published, used for commercial exploitation, or transmitted, in any form by any means, electronic, mechanical, photocopying, recording, or otherwise, without the express written permission of Creo Inc. This document is distributed in Adobe Systems Incorporated's PDF (Portable Document Format). You may reproduce the document from the PDF file for internal use. Copies produced from the PDF file must be reproduced in whole.

.....  
Creo Inc.  
3700 Gilmore Way  
Burnaby, B.C., Canada  
V5G 4M1  
Tel: +1.604.451.2700  
Fax: +1.604.437.9891  
<http://www.creo.com>  
.....

Revised April 2005

# Creating Files for Use in Preps

In order for Preps to correctly process a Macromedia® FreeHand® 10.0 document as a source file, you must save the document as an Encapsulated PostScript® (EPS) file.

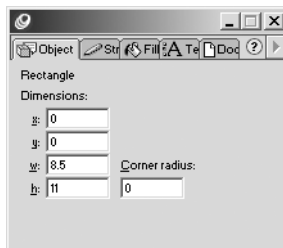
EPS files that are created from FreeHand documents can contain CMYK and spot colors, as well as OPI links. In addition, Freehand creates a separate EPS file for each page in the document. For example, when you export a three-page FreeHand document, three EPS files are created, one for each FreeHand page.

Each EPS file contains information about the image's bounding box size. In FreeHand, bounding boxes are sized based on the area occupied by the elements on the page. Therefore, the imposed image may be offset on the page or may not appear on the page at all. To resolve this, you have two choices:

- Use Preps to apply page offsets to compensate for the bounding box errors.
- Make the bounding box reflect the page size.

## Making the Bounding Box Reflect the Page Size

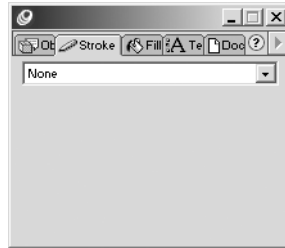
1. Draw a box that is the same trim size and in the same position as the FreeHand page. For example, if the FreeHand page is 8.5" x 11", draw a box that is 8.5" x 11".
2. Select the box.
3. On the Inspector palette, click the **Object** tab.



4. In the **w** and **h** boxes, make sure the box dimensions match the page dimensions.
5. Click the **Fill** tab.



6. Select **None**.
7. Click the **Stroke** tab.



8. Select **None**.

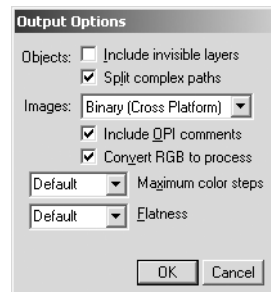


**Note:** A problem with FreeHand EPS files is that bounding box dimensions are always rounded to whole Adobe points. This can result in small page positioning errors. To avoid this problem, use FreeHand's snap-to-grid feature to position and size pages, based on a grid increment set to a whole number of Adobe points. For example, use a grid increment of 1/8th inch (9.0 pts) instead of 1/10th inch (7.2 pts).

## Naming and Saving the EPS File

To select output options:

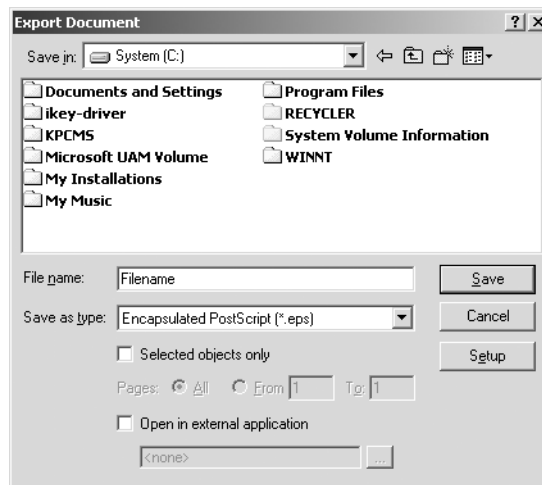
1. From the **File** menu, select **Output Options**.



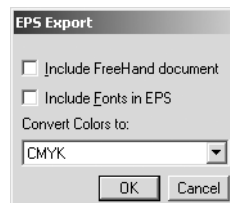
2. Clear the **Include invisible layers** check box.
3. Select the **Split complex paths** check box.
4. In the **Images** box, select **ASCII**, **Binary**, or **Binary (Cross Platform)** to include images. Select **None** if the graphics option specified by your print vendor is "omit images." To ensure compatibility between computer platforms, ASCII is recommended. Some Windows® configurations do not accept binary data.
5. Select the **Include OPI comments** check box.
6. Select the **Convert RGB to process** check box only if you selected **ASCII** or **Binary** for **Images** and there are RGB TIFF images in the document.
7. In the **Maximum color steps** box, select **Default**.
8. In the **Flatness** box, select **Default**.
9. Click **OK**.

## To export an EPS file:

1. From the **File** menu, select **Export**.



2. Select the location where you want to save the file.
3. In the **File name** box, type a file name.
4. In the **Format** box, select **Encapsulated PostScript (\*.eps)**.
5. Clear the **Selected objects only** check box.
6. Select the page range if required.
7. Clear the **Open in external application** check box.
8. Click **Setup**.



9. Clear the **Include FreeHand document** check box. When selected, this option increases the size of the EPS file and does not affect the image. Some output devices generate errors if the document is included.
10. Select the **Include Fonts in EPS** check box if you want to include fonts in the EPS file.
11. In the **Convert Colors to** box, select **CMYK**.
12. Click **OK**.
13. Click **Save**.

You have created an EPS file from a FreeHand 10.0 document. You can add the file to a Preps job.